

Anti-H_LGR5 hlgG1 Antibody(18G7H6A3)

Product information

| | |
|-----------------|--------|
| GM-46303AB-10 | 10 µg |
| GM-46303AB-100 | 100 µg |
| GM-46303AB-1000 | 1 mg |

Antibody Information

| | |
|--------------------|---|
| Species Reactivity | Human; Cynomolgus |
| Clone | 18G7H6A3 |
| Source/Isotype | Monoclonal Human IgG1 /k |
| Application | Flow Cytometry |
| Specificity | Detects LGR5 |
| Gene | LGR5 |
| Other Names | FEX; HG38; GPR49; GPR67; GRP49 |
| Gene ID | 8549 |
| Background | <p>The protein encoded by this gene is a leucine-rich repeat-containing receptor (LGR) and member of the G protein-coupled, 7-transmembrane receptor (GPCR) superfamily. The encoded protein is a receptor for R-spondins and is involved in the canonical Wnt signaling pathway. Although its ligand remains elusive, it has been shown that costimulation with R-spondin 1 and Wnt-3a induce increased internalization of LGR5. LGR5 also cointernalizes with LRP6 and FZD5 via a clathrin-dependent pathway to form a ternary complex upon Wnt ligand binding. Moreover, the rapid cointernalization of LRP6 by LGR5 induces faster rates of degradation for the former. It has been shown that the C-terminal region of LGR5 is crucial for both dynamic internalization and degradation to occur, although C-terminal truncation does not inhibit LRP6 interaction and internalization, but rather, heightens receptor activity. Thus, only the initial interaction with its unknown ligand and other membrane bound receptors is crucial in its role in Wnt signalling and not the internalization itself.[10] LGR5 is crucial during embryogenesis as LGR null studies in mice incurred 100% neonatal mortality accompanied by several craniofacial distortions such as ankyloglossia and gastrointestinal dilation.</p> |
| Storage | Store at 2-8°C short term (1-2 weeks). Store at ≤ -20°C long term. Avoid repeated freeze-thaw. |
| Formulation | Phosphate-buffered solution, pH 7.2. |
| Endotoxin | < 1 EU/mg, determined by LAL gel clotting assay |

Version:3.1 Revision Date:12/29/2023

Data Examples

Flow cytometry

H_LGR5 HEK-293 Cell Line (Catalog # GM-C22691) was stained with Anti-H_LGR5 hlgG1 Antibody(18G7H6A3) (Catalog # GM-46303AB) or isotype control antibody, followed by anti-Human IgG APC-conjugated Secondary Antibody.

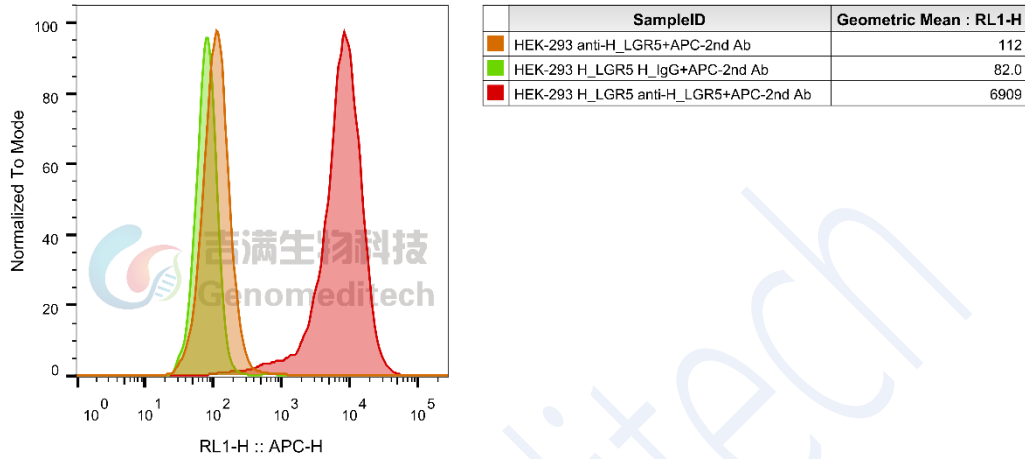


Fig 1. FACS

Flow cytometry

Cynomolgus_LGR5 HEK-293 Cell Line (Catalog # GM-C22699) was stained with Anti-H_LGR5 hlgG1 Antibody(18G7H6A3) (Catalog # GM-46303AB) or isotype control antibody, followed by anti-Human IgG APC-conjugated Secondary Antibody.

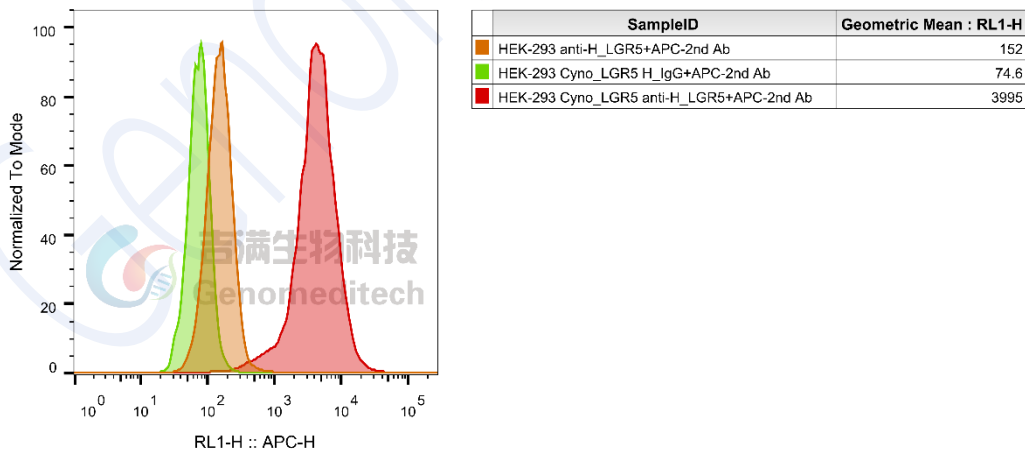


Fig 2. FACS